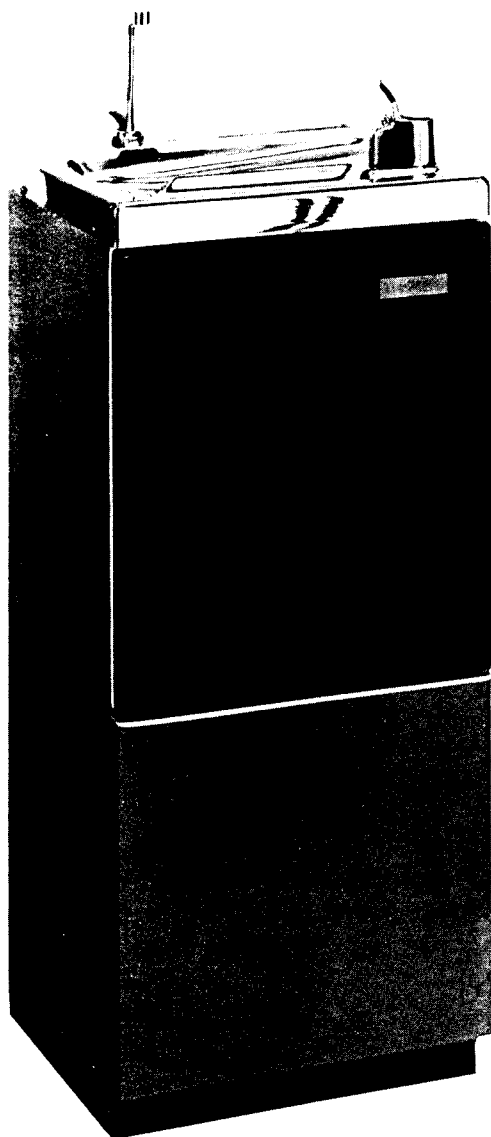


# SERVICE INSTRUCTIONS

...with Illustrated Parts Breakdown

## EBCO<sup>®</sup>

**WATER COOLER MODELS:  
DP3R-1, DP3RH-1  
WEFCO3-C, WEFHO3-C**



### DESCRIPTION

These models provide drinking water cooled to 50° F at 3 gallons per hour, while the DP3RH-1 also provides 185° F hot water at 45 cups per hour. Each model has a 1.2 cubic foot refrigerated compartment, is free standing and self supporting, and requires connections to supply water, electrical power and waste drain.

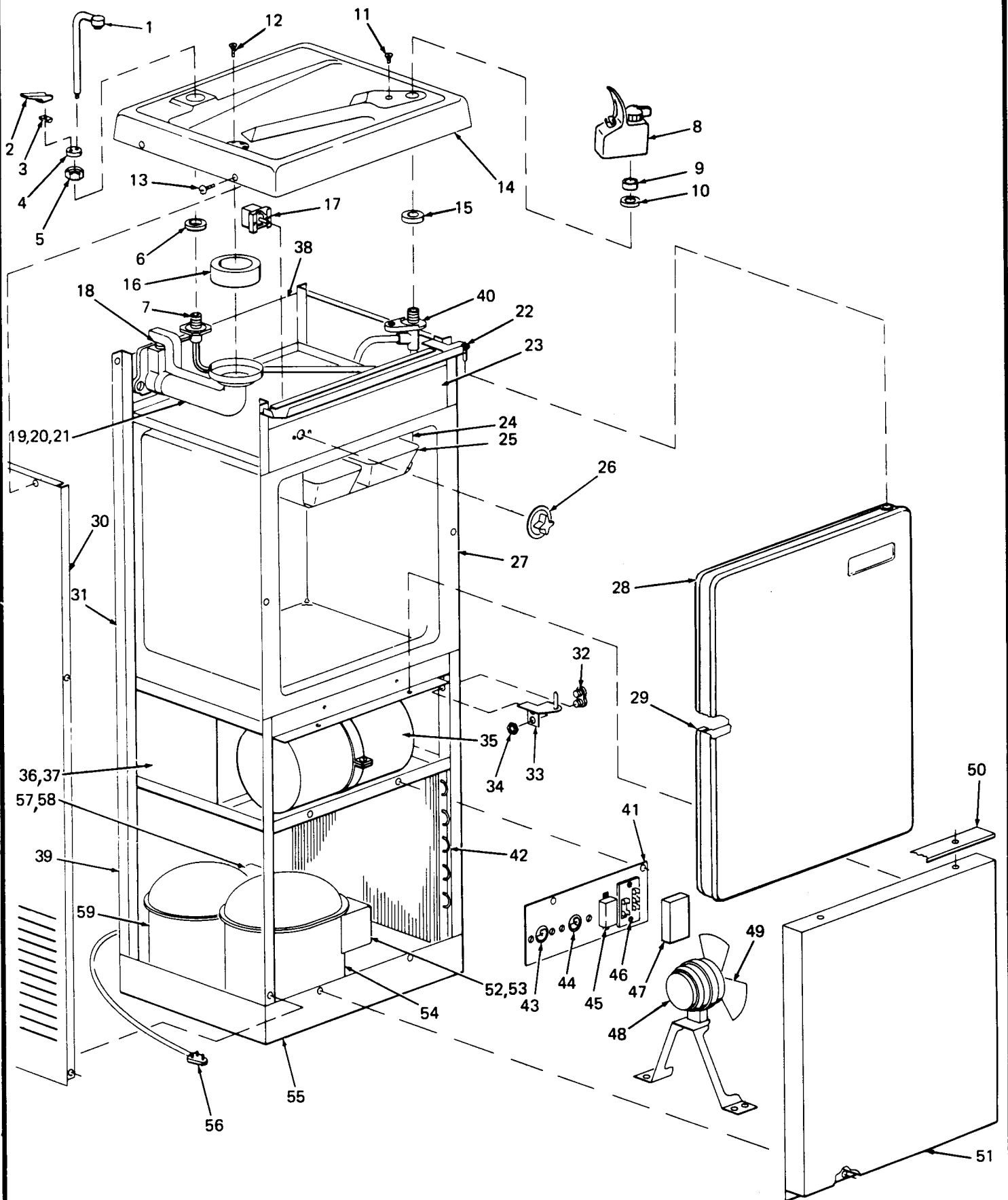
The two separate refrigeration systems are hermetically sealed at manufacture and are generally considered to be non-field serviceable. Each system incorporates an air-cooled compressor pumping refrigerant through a fan-cooled condenser and a capillary tube (expansion valve) to an evaporator. In the cold water system the evaporator is wrapped around the cooling tank; in the compartment system the evaporator is the ice cube tray support. The two systems share a common condenser frame and cooling fan.

The separate electrical circuits include automatic overload protection, adjustable cold control for water and compartment temperature provisions to operate the fan if either system operates, and adjustable hot control for the hot water temperature.

### SPECIFICATIONS

Voltage	115 VAC $\pm$ 10%/1PH/60 Hertz
Size	40" H., 17" W., 14" D.
Shipping Weight (Approx)	138 LBS.
Cold Water Capacity	3 GPH
Compressor (Front)	1/5 HP
Compressor (Full Load)	3.3 Amps
Compressor (Back)	1/20 HP
Compressor (Full Load)	1.5 Amps
Refrigerant	R-12
Hot Water Capacity	45 Cups/HR.
Hot Water Temperature	150° F to 185° F
Compressor Charge (Front)	5-3/4 OZ.
Compressor Charge (Back)	3-1/2 OZ.
Compressor Oil Charge	10 OZ.

Specifications subject to change without notice.



**MODELS: DP3R-1, DP3RH-1,  
WEFC03-C, WEFH03-C**

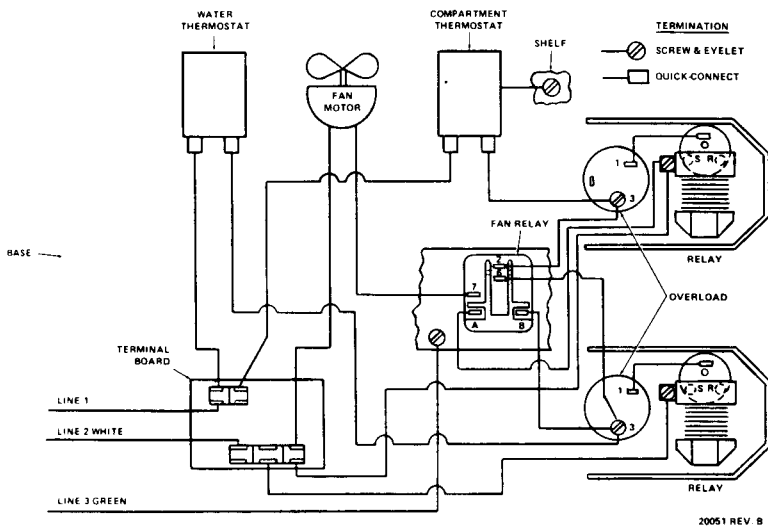
# PARTS LIST

ITEM NO.	DESCRIPTION	DP3R-1 WEFC03-C	DP3RH-1 WEFH03-C
1	Gooseneck	---	017590
2	Handle	---	017925
3	Tee Nut	---	017926
4	Body Cap	---	017927
5	Nut	---	017583
6	Gasket	---	017582
7	Valve Body Assembly	---	021189
8	Bubbler Valve	026551-002	026551-002
9	Bubbler Valve Gasket	008983	008983
10	Friction Washer	009281	009281
11	Bubbler Screw	026680-005	026680-005
12	Drain Screw	026655-002	026655-002
13	Top Screw	026630-005	026630-005
14	Top	017930	017930
15	Gasket	010545	010545
16	Waste Gasket	018050	018050
17	Cold Control Compartment	027040-004	027040-004
18	Check Valve	---	019690
19	Waste Assembly	018692	018692
20	Insulation (LH)	021484	021316
21	Insulation (RH)	021483	021317
22	Upper Hinge Assembly	023460	023460
23	Compartment Trimplate	017357	017357
24	Evaporator	017379	017379
25	Ice Cube Tray	018159-002	018159-002
26	Knob	019838	019838
27	Compartment Liner	019803	019803
28	Door	021575	021575
29	Replacement Door Gasket	022535	022535
30	Side Panel — Tan	019403-001	019403-001
	Side Panel — Lt. Beige *W/W	019403-003	019403-003
31	Leg Support Angle	017404	017404
32	Hinge Retainer	017706	017706
33	Lower Hinge	023459	023459
34	Hex Nut and Lockwasher	026824-007	026824-007
35	Hot Tank Assembly	---	017678
36	Cooling Tank Assembly	017467	017468
37	Cooling Tank Insulation (2 Required)	017599	017599
38	Upper Back Panel — Tan	017402	017402
	Upper Back Panel — Lt. Beige *W/W	024466	024466
39	Lower Back Panel — Tan	017418	017418
	Lower Back Panel — Lt. Beige *W/W	024467	024467
40	Top Supply Line	017661	017680
41	Relay Bracket	017506	017506
42	Condenser	017666	017666
43	Hot Control	---	027040-013
44	Cold Control	027040-008	027040-008
45	Fan Relay	023616	023616
46	Terminal Base	023265	023265
47	Terminal Cover	019793	019793
48	Fan Motor	023845	023845
49	Fan Blade	022628	022628
50	Cover	017396-002	017396-002
51	Lower Front Cover — Tan	017412	017412
	Lower Front Panel — Lt. Beige *W/W	024468	024468
52	Overload	017290	017290
53	Relay	017245	017245
54	Cold Water Compressor (Includes 52 and 53)	017243	017243
55	Base Assembly	017435	017435
56	Service Cord	026540-003	026540-003
57	Overload	017571	017571
58	Relay	017573	017573
59	Compartment Compressor (Includes 57 and 58)	017576	017576
NOT SHOWN	Heat Limiter	---	024373-002

\*W/W — White Westinghouse

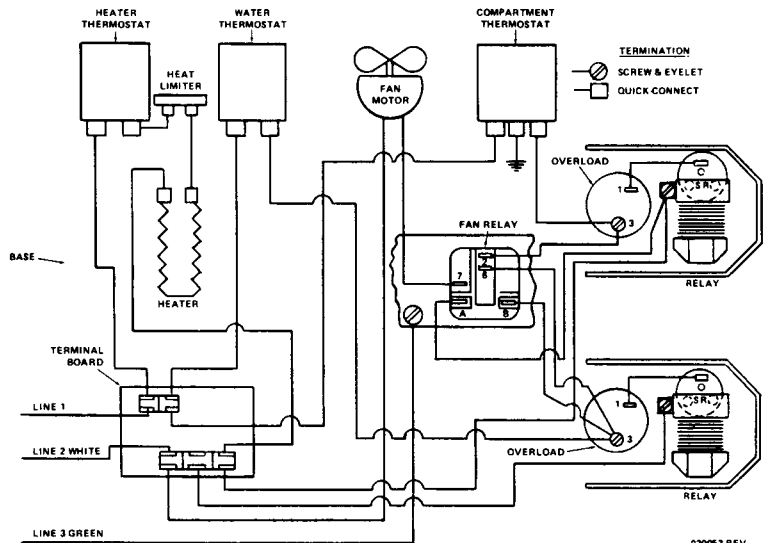
# SERVICE CHECK CHART

TROUBLE	PROBABLE CAUSE	REMEDY
Unit not running	No electrical power	Check power source Check that cold control is not in off position
	Defective cold control	Replace
	Defective relay	Replace
Unit running but not cooling	Refrigerant leak or low refrigerant	Add refrigerant
Unit running continuously	Defective cold control	Replace
	Low refrigerant	Add refrigerant



**DP3RH-1**  
**ELECTRICAL DIAGRAM**

**DP3R-1**  
**ELECTRICAL DIAGRAM**



**EBCO**® **MANUFACTURING COMPANY**

265 N. Hamilton Rd. • P.O. Box 13150 • Columbus, OH 43213-0150 • 614/861-1350 • Cable: EBCO • Telex: 246637